



OVERVIEW

Duragutter is an engineered system with easy to follow, step-by-step instructions.

Installers must review both this installation guide and the [installation videos](#) prior to installation.

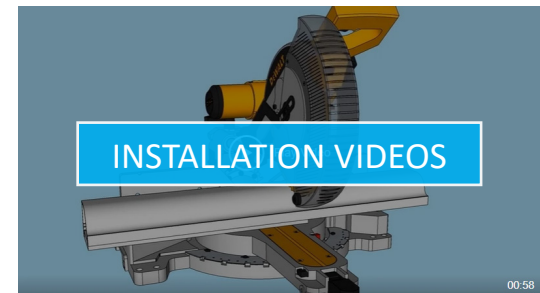


TABLE OF CONTENTS

General Installation Notes.....	2
Cutting and Joining Duragutter.....	2-7
Installing Outlets	8
Installing End Caps and Internal Plugs.....	9-11
Attaching Gutter to Fascia.....	12
Installing Integral Flashing.....	13
Installing Leaf Guard	

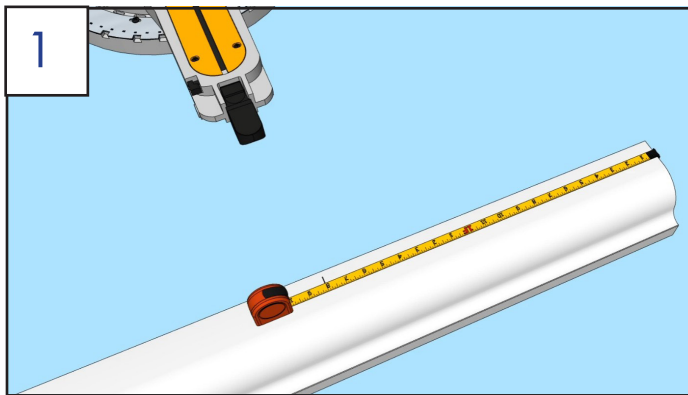
Specialized Tools Required for Installation

- 12" sliding compound miter saw with minimum 80 tooth blade
- Bar clamp (minimum 5 1/2" throat depth) and miter clamp - we can include both in your order
- 7/16" drill bit
- 2 1/2" carbide hole saw (for 3" round outlet) or jigsaw with metal cutting blade (for rectangular outlets)

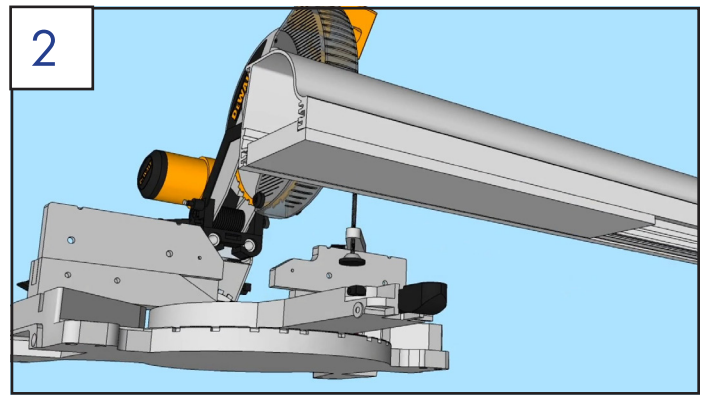
General Installation Notes

1. Plan the work sequence. Always make inside miters before outside miters.
2. Use only glues and sealants supplied or approved by Duragutter.
3. When working with short lengths, it may be easier to assemble joints at waist level and then lift the assembled unit into place.
4. Use eye and ear protection when cutting Duragutter. Use dust collection or cut over a tarp or sweepable surface.

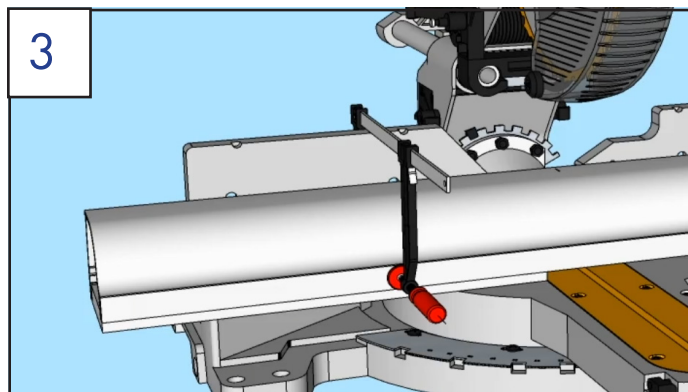
Cutting Duragutter



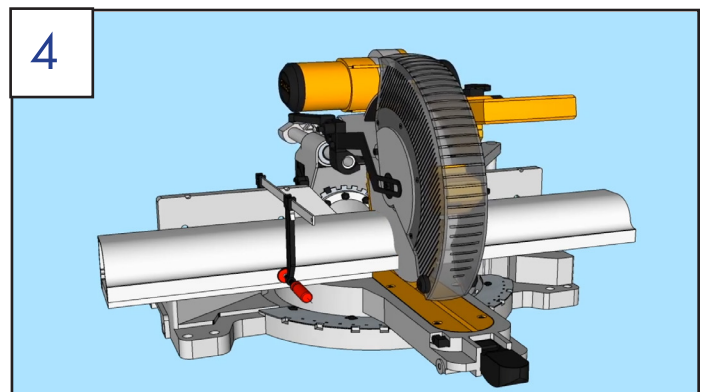
- Use a 12" sliding miter saw with a minimum 80 tooth blade.
- Measure and mark piece.



- Cut gutter upside down with front facing forwards.
- Insert supplied wooden block to raise front edge of gutter and prevent deformation of gutter shape when clamping.



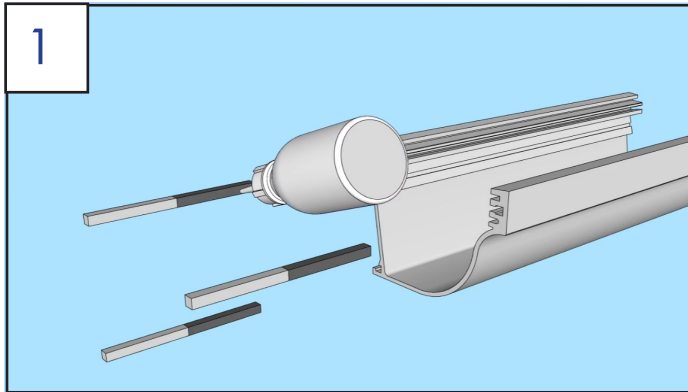
- Clamp front of gutter to saw fence - keep hands off gutter when cutting.
- To make a small piece, cut it off of a large piece. Do not try to clamp pieces smaller than 15".



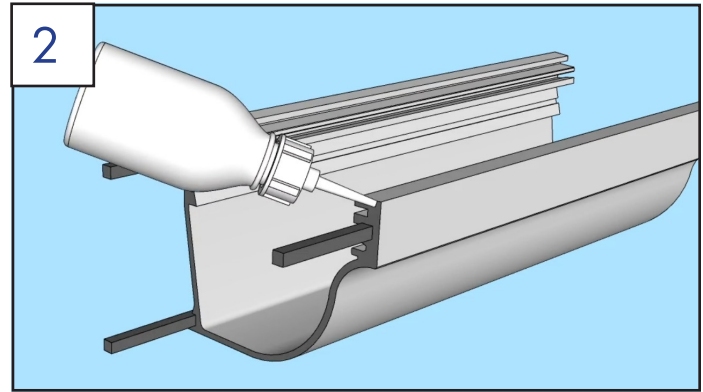
- Cut slow and steady - 10 seconds per cut. Fast cuts risk kickback and rough edges.
- Make miter cuts the same way. Ensure clamp is out of the way of the cut.

NEXT: JOINING STRAIGHT SECTIONS

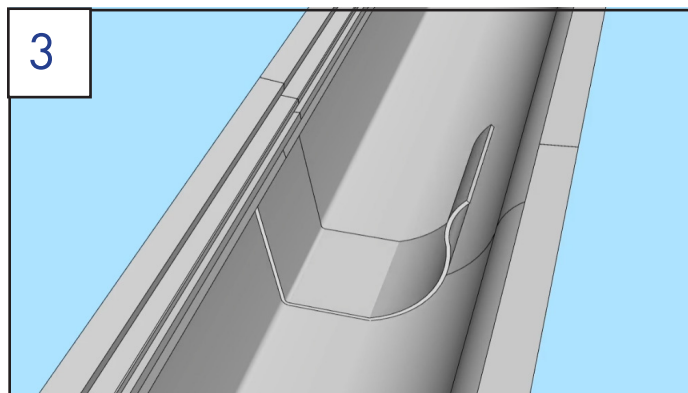
Joining Straight Sections (Butt Joints)



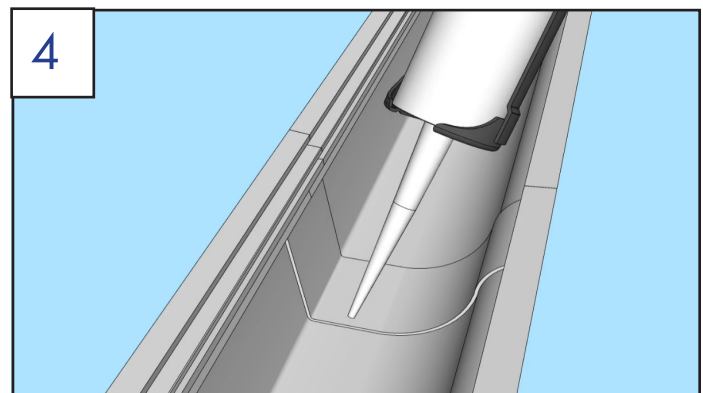
- Test fit the joint to ensure accuracy before installing pins.
- Apply 2P-10 Adhesive to one half of 3 straight pins. Slide the pins halfway into the pin grooves on gutter.



- Apply 2P-10 Adhesive to other half of pins and the edge of one gutter. Slide joint together.
- Clean any excess glue from outside surface of gutter with acetone rag immediately.



- Use tape labeled "BUTT JOINT".
- Apply pre-cut tape over joint. Peel a small amount of tape backing at a time, carefully stick tape, and apply pressure with fingers to remove any air bubbles.



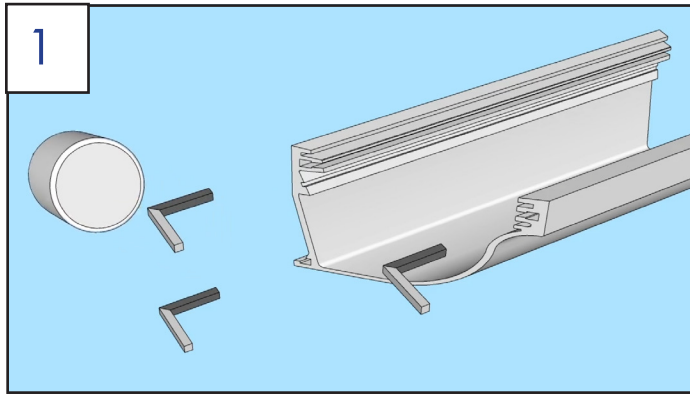
- Apply sealant in the grooves above the tape, and over the sides of the tape.

Question?

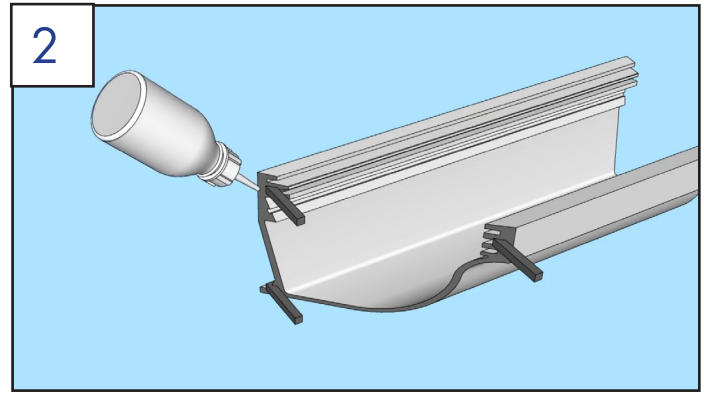
Give us a call at (781) 862-0507

NEXT: INSIDE MITERS

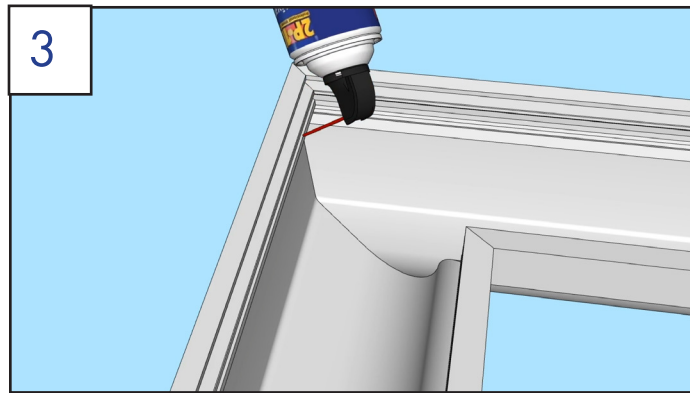
Making Inside Miters



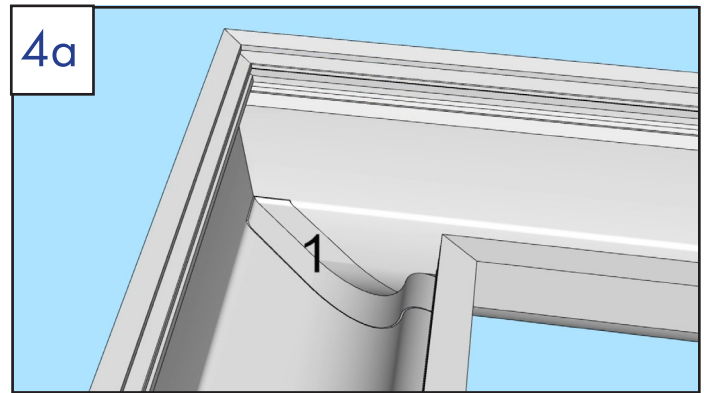
- Test fit joint to ensure accuracy before installing pins.
- Apply 2P-10 Adhesive to one half of 3 90° pins, and slide the pins halfway into the pin grooves on gutter.



- Apply 2P-10 Adhesive to other half of pins and the edge of one gutter. Slide joint together.
- Clean any excess glue from outside surface of gutter with acetone rag immediately.



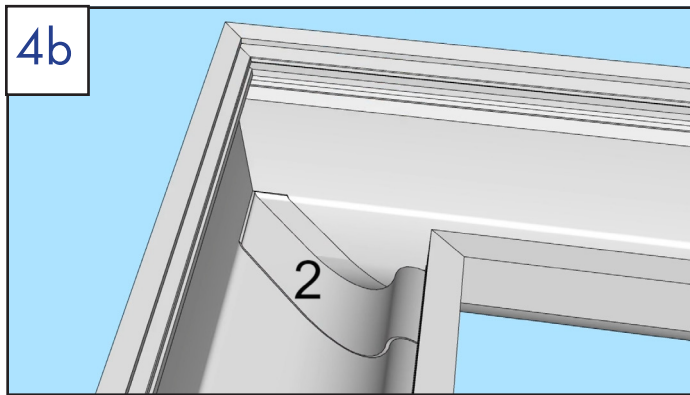
- Hold joint together and spray pins with 2P-10 Activator to instantly cure glue. If more working time is desired (approx. 5 mins), do not use Activator.
- Do not spray Activator on outside surface of gutter, as it can permanently stain the finish.



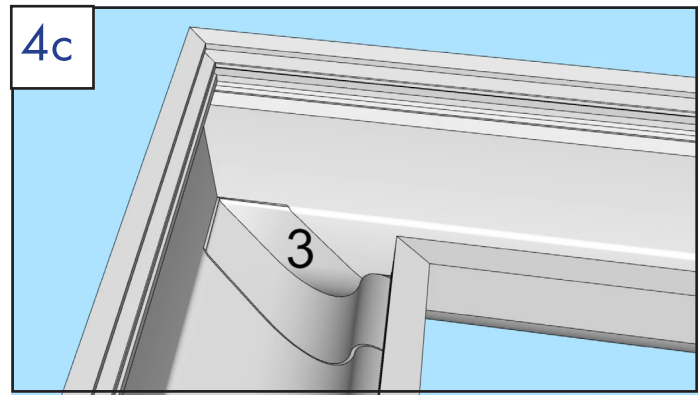
- Use tape kit labeled “INSIDE MITER”.
- Install 1st piece of tape starting at bottom corner.
- Peel a small amount of tape backing at a time, carefully stick tape, and apply pressure with fingers to remove any air bubbles.
- If temperature is below 35° F / 1.6° C, apply a small amount of 2P-10 Adhesive under tape.

CONTINUED ON NEXT PAGE

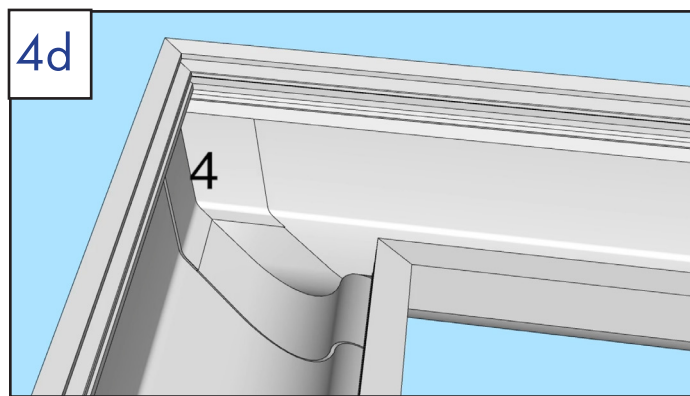
Making Inside Miters (Continued)



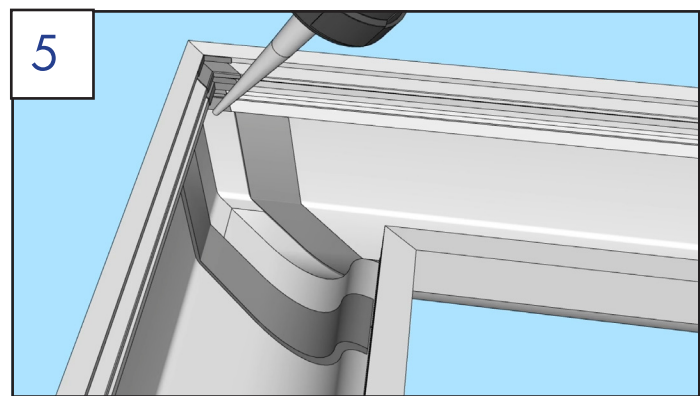
- Install 2nd piece of tape on left side of joint.



- Install 3rd piece of tape on right side of joint.



- Install 4th piece of tape on inside corner of joint, starting at the top.



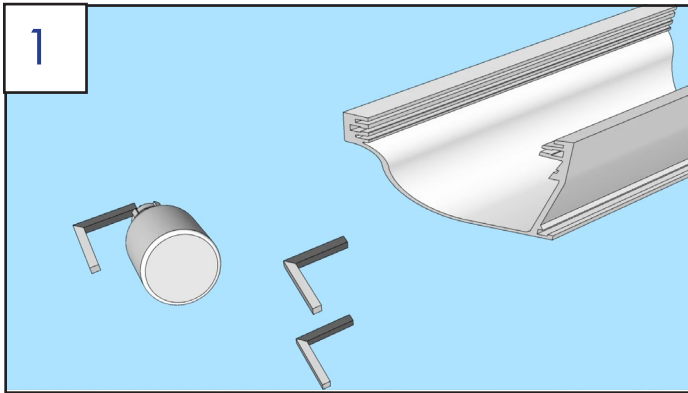
- Apply sealant in the grooves above the tape, and over the sides of the tape.

Question?

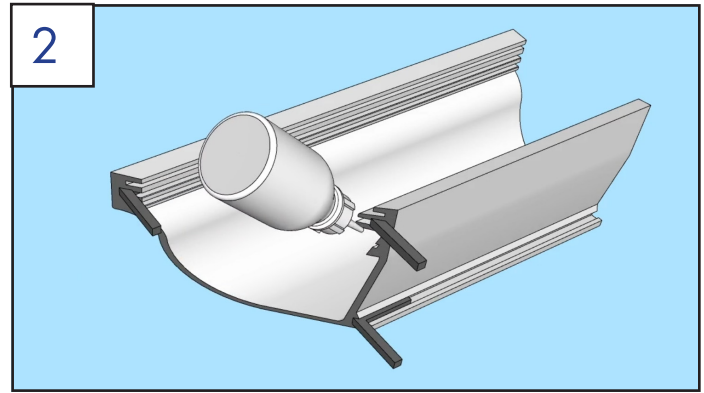
Give us a call at (781) 862-0507

NEXT: OUTSIDE MITERS

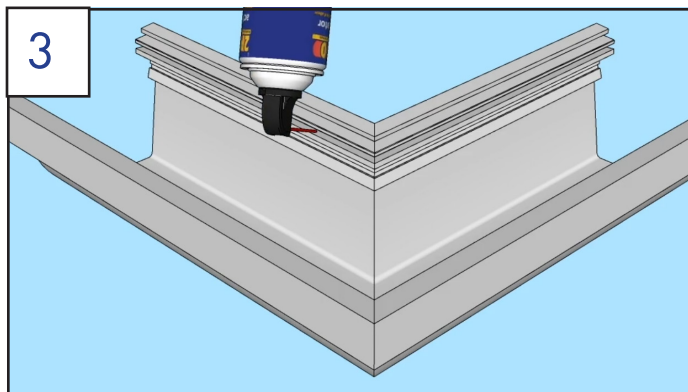
Making Outside Miters



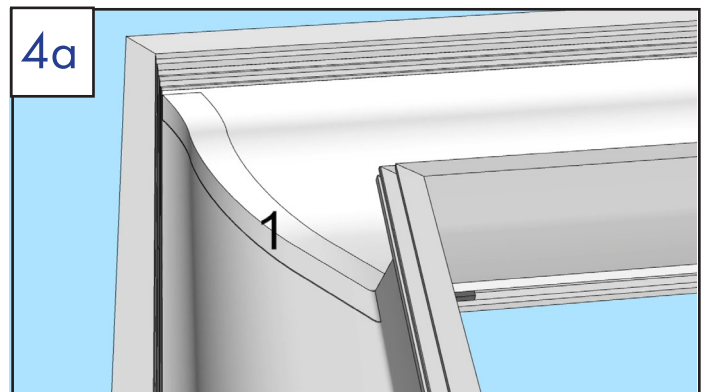
- Test fit joint to ensure accuracy before installing pins.
- Apply 2P-10 Adhesive to one half of 3 90° pins, and slide the pins halfway into the pin grooves on gutter.



- Apply 2P-10 Adhesive to other half of pins and the edge of one gutter. Slide joint together.
- Clean any excess glue from outside surface of gutter with acetone rag immediately.



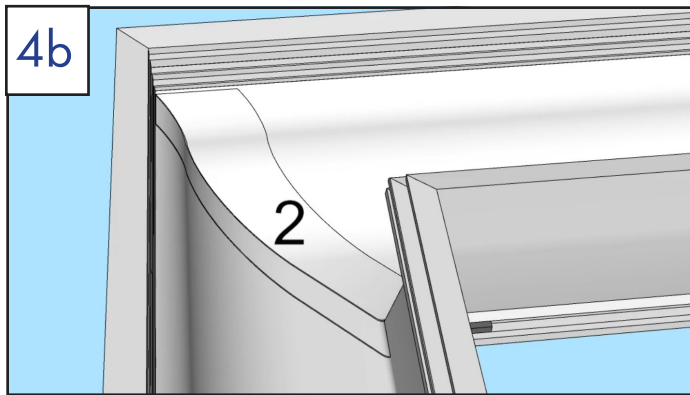
- Hold joint together and spray pins with 2P-10 Activator to instantly cure glue. If more working time is desired (approx. 5 mins), do not use Activator.
- Do not spray Activator on outside surface of gutter, as it can permanently stain the finish.



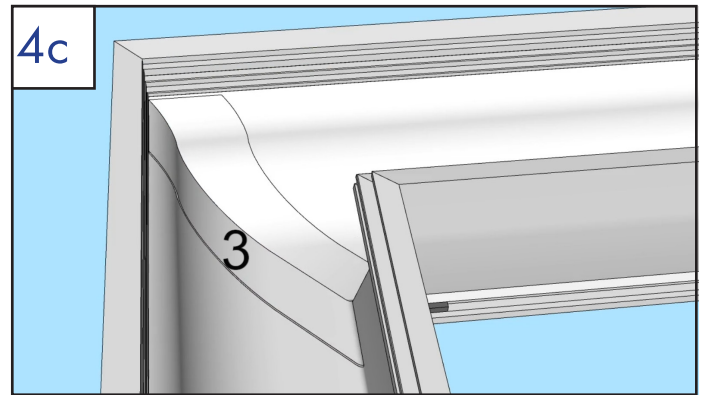
- Use tape kit labeled "OUTSIDE MITER".
- Install 1st piece of tape starting at bottom corner.
- Peel a small amount of tape backing at a time, carefully stick tape, and apply pressure with fingers to remove any air bubbles.
- If temperature is below 35° F / 1.6° C, apply a small amount of 2P-10 Adhesive under tape.

CONTINUED ON NEXT PAGE

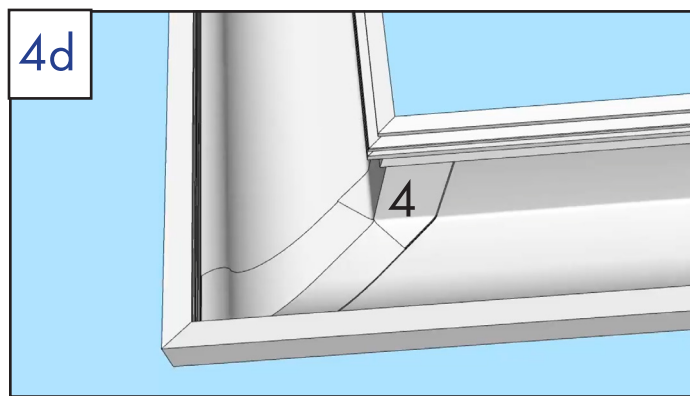
Making Outside Miters (Continued)



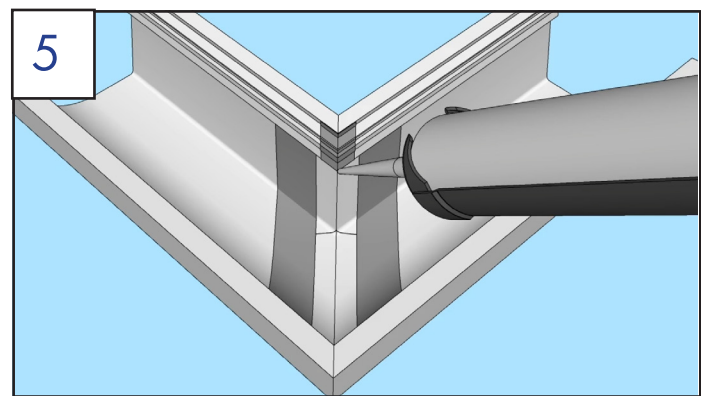
- Install 2nd piece of tape on right side of joint.



- Install 3rd piece of tape on left side of joint.



- Install 4th piece of tape on inside corner of joint, starting at the top.
- Smooth tape and apply pressure with fingers to remove any bubbles or wrinkles.



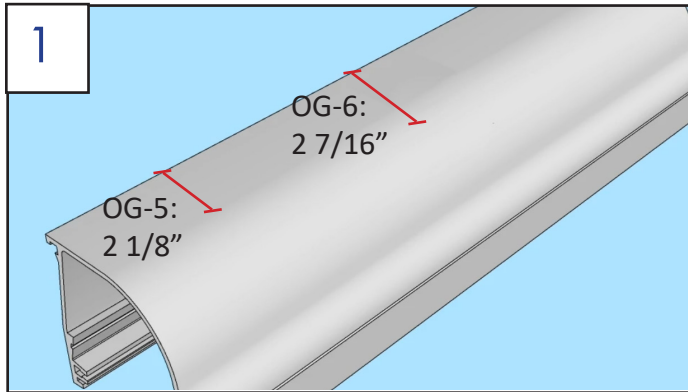
- Apply sealant in the grooves above the tape, and over the sides of the tape.

Question?

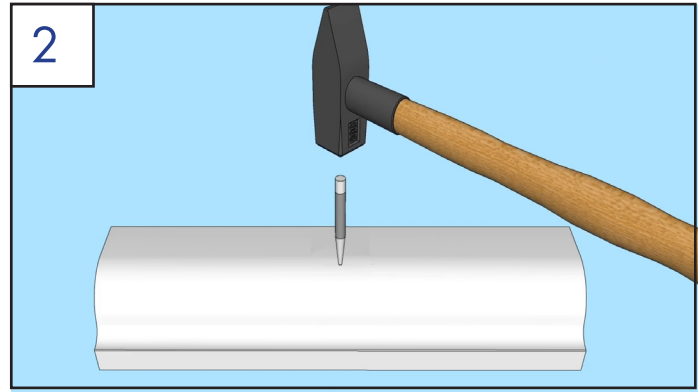
Give us a call at (781) 862-0507

NEXT: INSTALLING 3"
ROUND OUTLET

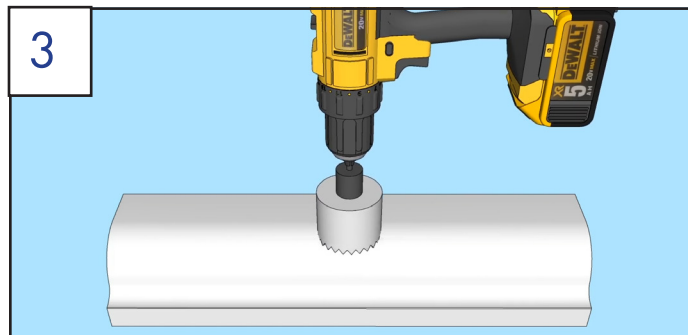
Installing Outlet for 3" Round Downspout on OG-5, OG-6



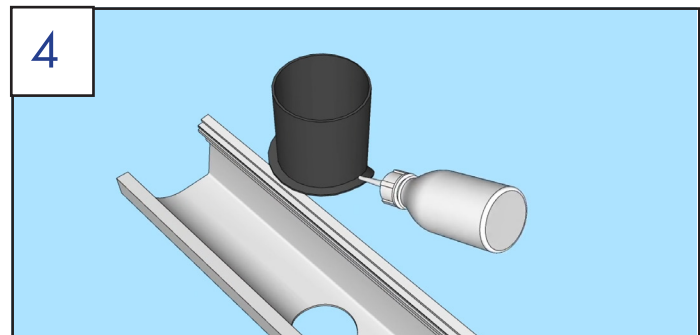
- Install outlets on the ground before installing gutter
- On OG-5, mark 2 1/8" from back edge of gutter
- On OG-6, mark 2 7/16" from back edge of gutter



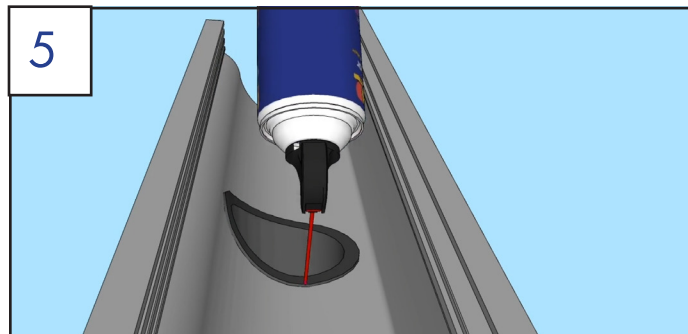
- Use center punch to mark center of hole.



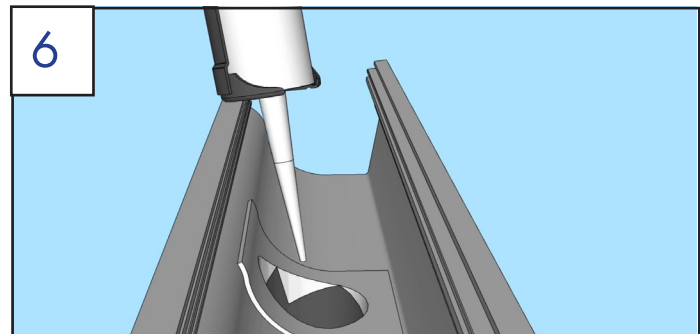
- On OG-5, drill hole with 2 1/2" carbide hole saw.
- On OG-6, drill hole with 2 3/4" carbide hole saw.
- **Hold or clamp gutter securely while drilling.**



- Remove any burrs on inside of hole with a file.
- Apply 2P-10 Adhesive to bottom lip of outlet and insert outlet in gutter.



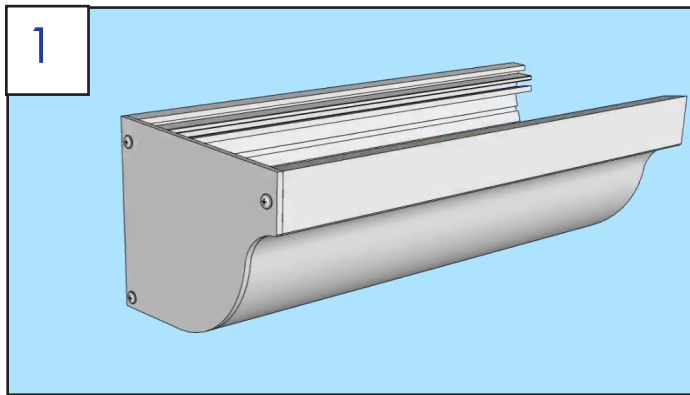
- Spray perimeter of hole with 2P-10 Activator.



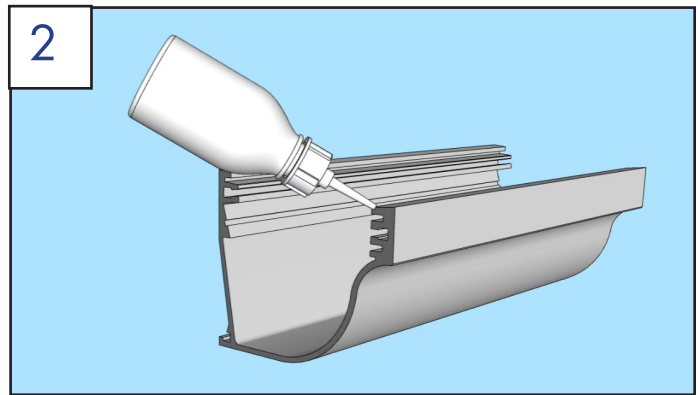
- Apply rectangular piece of tape over whole outlet, cut X in middle, and fold edges of tape into outlet.
- Apply Dicor sealant over edges of tape.

NEXT: INSTALL END CAPS

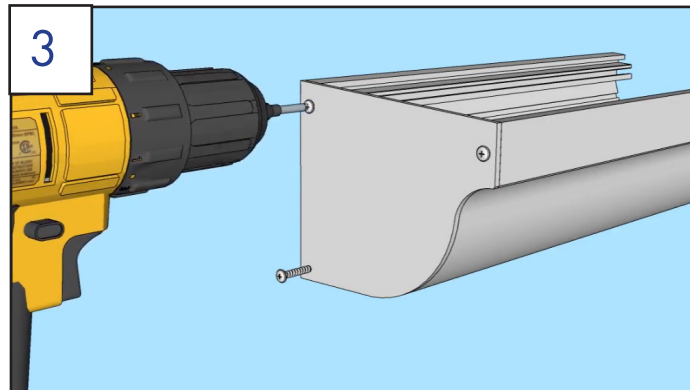
Installing End Caps



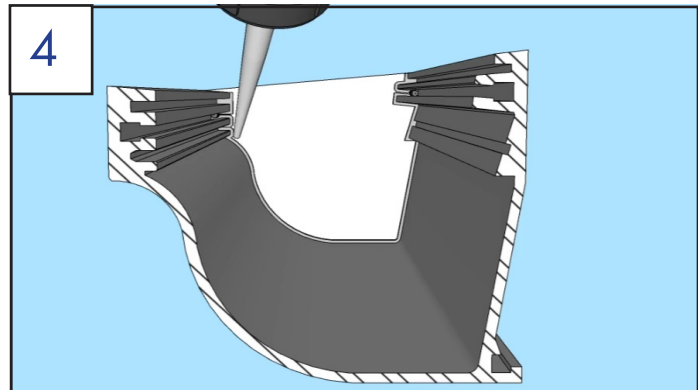
- 1/8" thick aluminum end caps are used where the end of a gutter is exposed. End cap screws are included with each end cap.
- They have countersunk holes on each side, so there are no "lefts" or "rights". They screw into the internal grooves in the gutter.



- Apply 2P-10 Adhesive to edge of gutter.



- Align end cap with gutter and press tight.
- Install 3 supplied screws in pre-drilled holes.



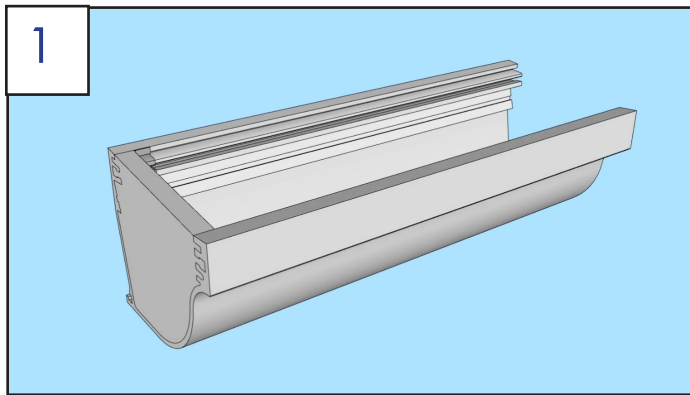
- Apply sealant to the inside of end cap, including in grooves in gutter.

Question?

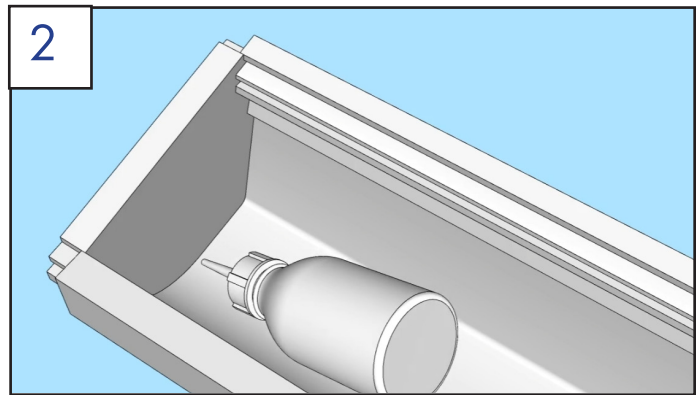
Give us a call at (781) 862-0507

NEXT: INSTALL
INTERNAL PLUGS

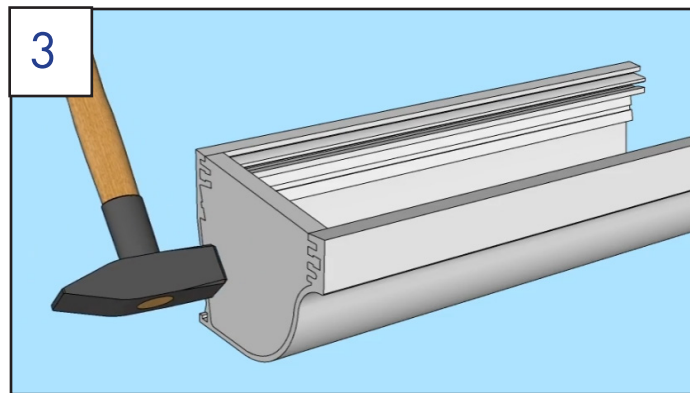
Installing Internal Plugs



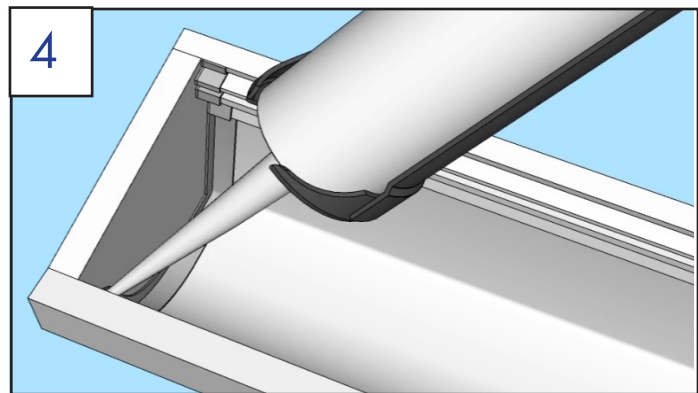
- PVC internal plugs seal off the gutter where it butts into a wall or piece of trim. They fit inside the gutter and are flush with the outside.
- Do not use where end of gutter is exposed - use end cap instead.



- Insert plug 1/8" into gutter, taking care to align the edges.
- Apply 2P-10 Adhesive to the inside of the gutter next to the plug.



- Tap the plug flush with the end of the gutter.



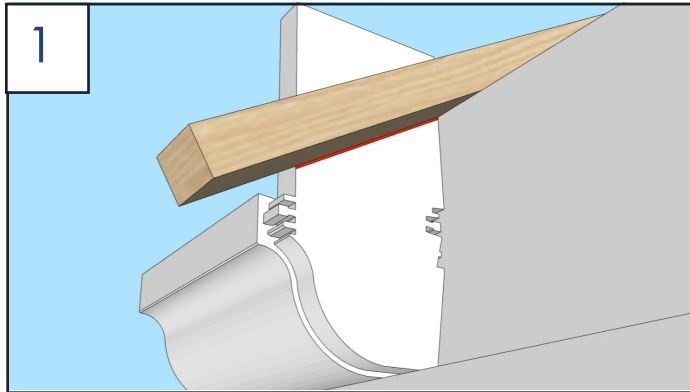
- Apply sealant to inside of plug, including the grooves in gutter.

Question?

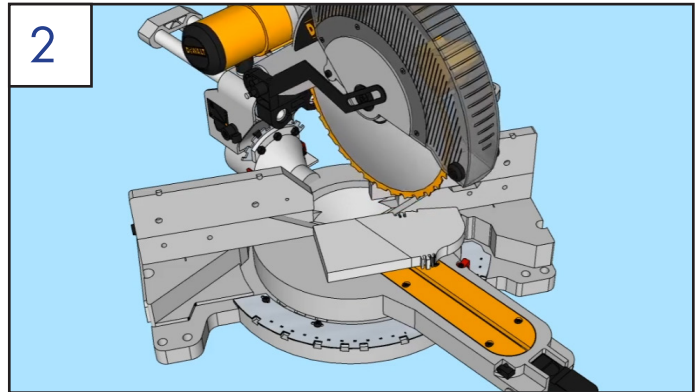
Give us a call at (781) 862-0507

**NEXT: INTERNAL PLUGS
AT RAKE MITERS**

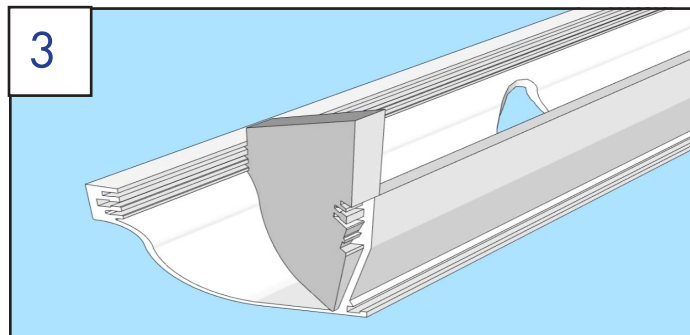
Installing Tall Internal Plug (use at Rake Miter only)



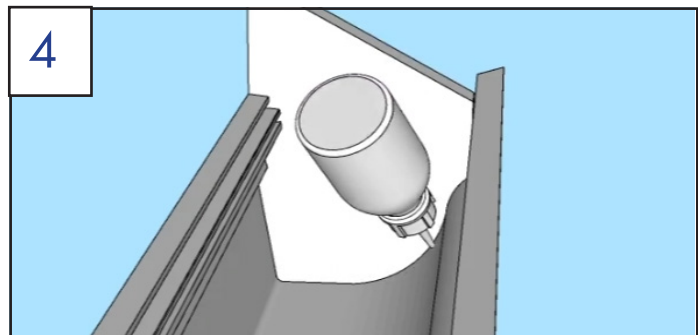
- Insert plug 1/8" into a scrap of gutter.
- Place gutter at desired height and mark roof pitch on plug.



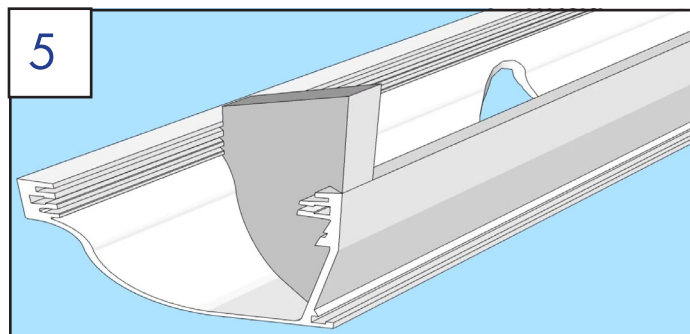
- Remove plug and cut at roof pitch angle on miter saw.



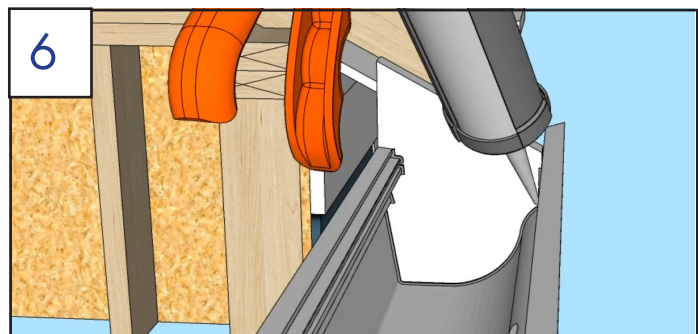
- Tap the plug part way into the gutter, taking care to align the edges.



- Apply 2P-10 Adhesive to the inside of the gutter next to the plug.



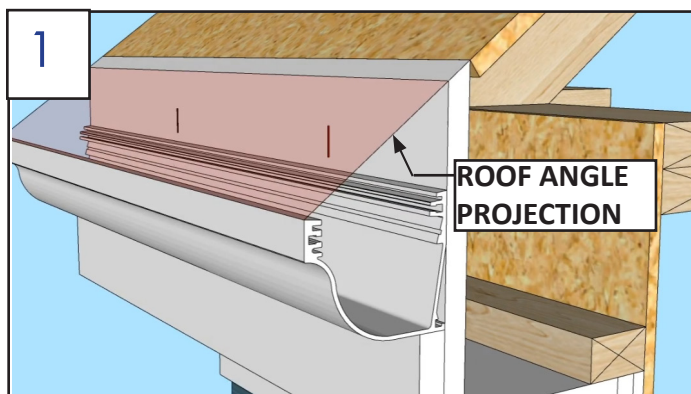
- Tap plug all the way into the gutter.



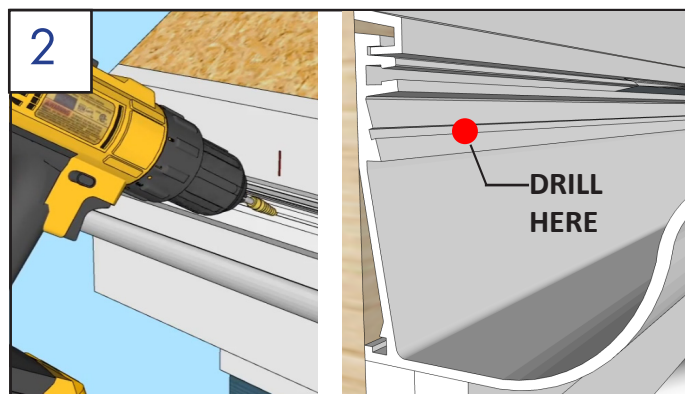
- Apply sealant to the inside of the plug, including the grooves in gutter.

NEXT: ATTACH GUTTER TO FASCIA

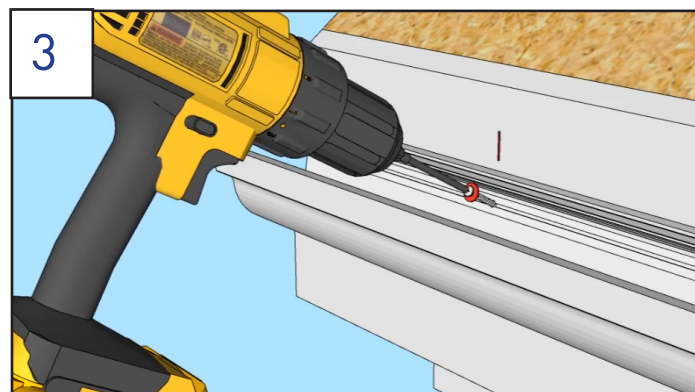
Attaching Gutter to Fascia



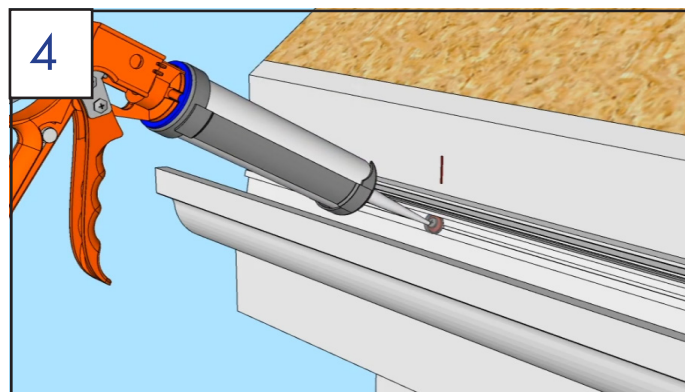
- If applicable, mark rafter locations on fascia.
- Set gutter into place on molding or temporary blocks.
- On sloped roofs, outside top lip of gutter should align with projection of angled roof plane.



- Drill a 7/16" hole centered on the angled shelf inside gutter.



- Install screws with washers. Tighten until washer is slightly compressed. Do not overtighten.
- Use one screw per rafter. If there is a structural sub-fascia, place screws at 16" intervals.



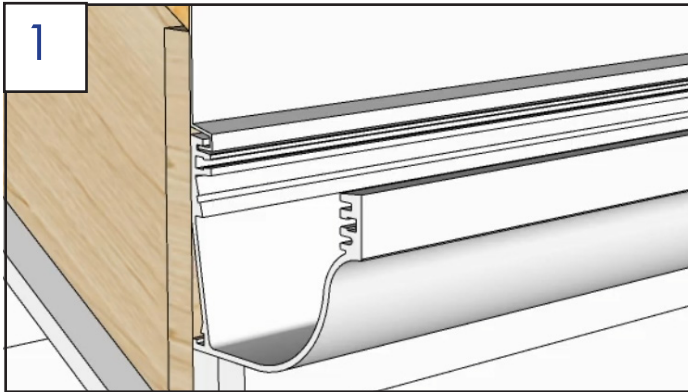
- Cover the screw head and washer with sealant.

Question?

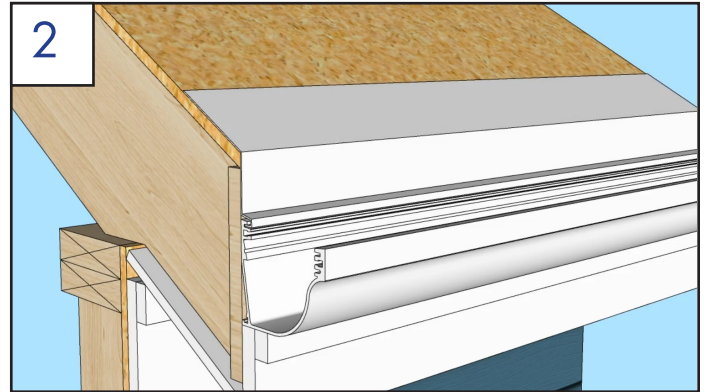
Give us a call at (781) 862-0507

NEXT: INSTALL
INTEGRAL FLASHING

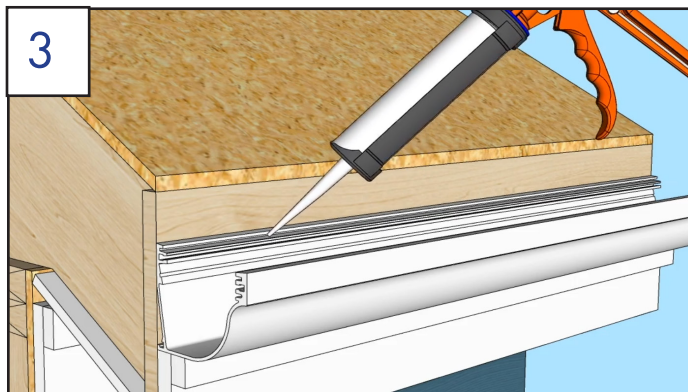
Installing Integral Flashing



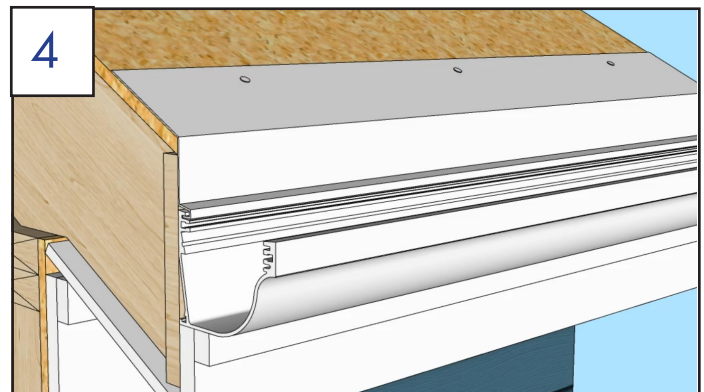
- Pre-bent edge of metal flashing fits into top groove inside gutter. On membrane roof (e.g. EPDM), flashing should be installed after membrane, and cover tape should be installed over flashing. On shingle roof, flashing should be installed before Ice and Water Shield.



- Bend the upper part of the flashing to the proper roof angle (or specify the angle and have us bend it for you).



- For extra protection against ice dams, apply sealant in the top groove before installing flashing.



- Install flashing in top groove inside gutter and nail to roof. Each piece of flashing should overlap adjacent pieces by 3".

Question?

Give us a call at (781) 862-0507

NEXT: INSTALL PVC
LEAFGUARD